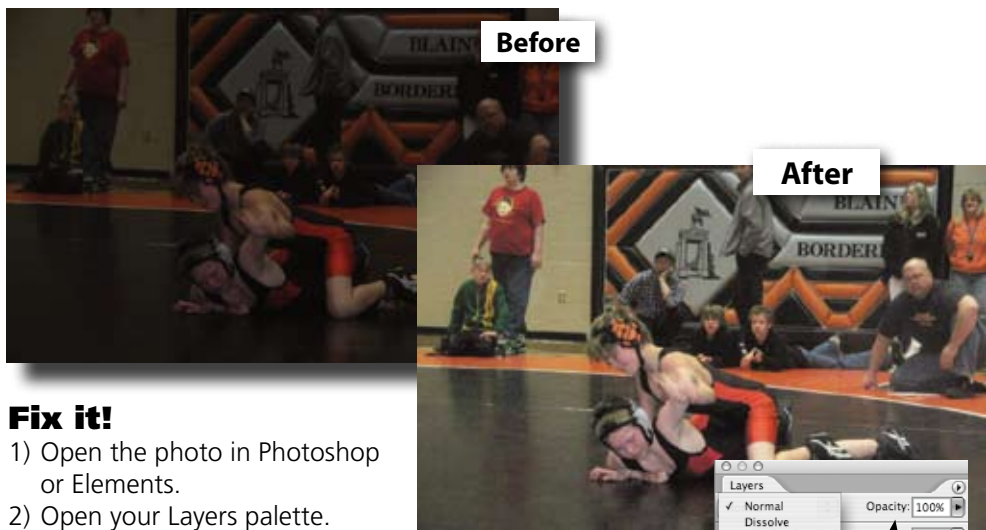


Fix 90% of your photo problems

Too dark?



Fix it!

- 1) Open the photo in Photoshop or Elements.
- 2) Open your Layers palette.
- 3) From the dropout menu on the Layers palette choose Duplicate Layer. Or create a duplicate layer by typing Control (Command-Mac) J.
- 4) At the top of the Layers palette you will see a drop down menu that says Normal. Click on that menu and choose Screen. If the photo is still too dark, duplicate that layer again for as many times as it takes to get the photo the way you like it.
- 5) Choose Flatten from the bottom of the Layers menu and save the file.

You can also micro adjust the photo by playing with the Opacity settings of your duplicated layer.

Step 4

Too light?



Fix it!

- 1) Open the photo in Photoshop or Elements.
- 2) Open your Layers palette.
- 3) From the dropout menu on the Layers palette choose Duplicate Layer. Or create a duplicate layer by typing Control (Command-Mac) J.
- 4) At the top of the Layers palette you will see a drop down menu that says Normal. Click on that menu and choose Multiply. If the photo is still too light, duplicate that layer again for as many times as it takes to get the photo the way you like it. (Step 4 on right but choose Multiply.)
- 5) Choose Flatten from the bottom of the Layers menu and save the file.

Bad lighting?

Fix it!

- 1) In Photoshop, open the problem photo
- 2) Choose Image>Adjustments>Curves.
- 3) Click on the middle eyedropper icon on the right side of the dialog box. (Figure A)
- 4) With the eyedropper tool, click any part of the photo that should be gray. Yes, GRAY. You should notice the change immediately. But keep going if the photo still needs more work.
- 5) Click the Layer Adjustment icon at the bottom of the Layers palette and choose Hue/Saturation (Figure B)
- 6) Drag the saturation slider to the left to desaturate the entire photo.
- 7) If only one color is the problem (like red) then choose Red from the drop down menu and desaturate it. (Figure C)



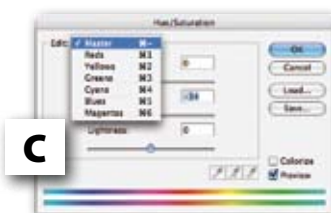
A



Curves only



B



C

If you have Photoshop Elements you can accomplish the same thing by choosing Auto Color Correction from the Enhance menu. It does exactly the same thing, even easier.

Backlit?

Fix it!

- 1) Open the photo in Photoshop (sorry, this only works in Photoshop CS and above)
- 2) From the Image menu choose Adjustments>Shadow/Highlight.
- 3) When it opens (or when you check Preview), be prepared for a major shock. You can usually leave the default settings alone but you can fiddle with them if you want to. The difference that happens immediately will blow you away.



Step 2

If you have Photoshop Elements you can do the same thing by choosing Enhance>Adjust Lighting> Shadow/Highlights.